

All photographs by Harry Rigby (Editor - CTA Bulletin)



The Regal Kingston in April 2006, still on bingo

Its proposal demonstrates intent to undertake a significant degree of reinstatement and restoration of original architectural features. Acton Arts Centre Group is also reported to be investigating possible utilisation of the cinema. See p24 last Bulletin.

The rotunda foyer and stairway of the **Odeon** at Eltham have now been renovated and incorporated into a gymnasium. The terrazzo and mosaic floor of the lobby is retained and the prominent central balustrade, grilles and windows of the stairwell restored. See p26 last Bulletin.

Unlisted

Wayne Hemingway, a fashion designer, is promoting the concept of salvaging and resiting the sculptures by Newbury Trent currently located upon the façade of the **Gaumont Palace** in Cheltenham, which is shortly to be redeveloped. It has been suggested that these should be mounted on a suitable structure in the locale or, if this proves unfeasible, on an appropriate entertainment venue elsewhere.

Plans announced for renovation and occupation of the **Regal** at Highams Park by a commercial organisation detail demolition of the restaurant area and restoration of the frontage. Proposals for the auditorium are unclear. As reported previously, the local populace had expressed interest in securing the

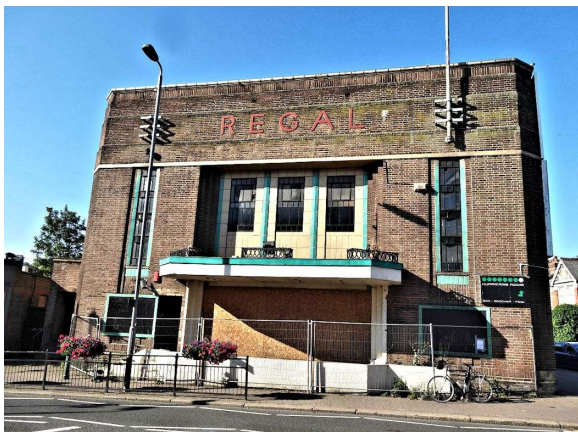


The Gaumont Palace Cheltenham, still an Odeon in May 2006; the murals on the front are clearly visible

building for community activities and it was anticipated that an application to register it as an Asset of Community Value might be forthcoming.

The owner of the **Gaumont Palace** in Chelsea has applied for a Certificate of Immunity from Listing; The Cadogan Estate is to be reminded of its recent assurance that the main façade of the cinema would be retained in any future development of the premises. See p11 last Bulletin.

The Association objected to the application for demolition of the **Curzon** in the Old Swan district of Liverpool; regrettably the local council



The Regal Highams Park in August 2013



The *Rialto/Granada* in Upper Norwood in April 2006

scheme for a Picturehouse Cinema in Nettlefold Hall, situated in nearby West Norwood. See p25 last Bulletin.

had insufficient grounds to withhold permission, as the cinema ceased its purposed operation in 1960 and only the impressive exterior survives, the interior having been the subject of radical alteration. See p23 last Bulletin.

Following closely upon the issue of a Certificate of Immunity from Listing relating to **The Point** at Milton Keynes, permission has now been sought and granted for its demolition. See p26 last Bulletin.

The **Rialto** in South London's Upper Norwood has been registered as an Asset of Community Value. Prospects of film exhibition returning to this location may be adversely influenced by the